



## Accessing the Sales Training in the Bravo Health LMS

Much of our Bravo University training is deployed through our Bravo LMS (Learning Management System). Through the LMS you will be able to access curriculum, engage in learning activities, complete required tests, and participate in forums and chats.

Not only is the Bravo LMS a rich learning environment, but it also is capable of keeping track of every module you view and every test you successfully complete, and reports your progress and success to those who need to be aware of your level of commitment to your professional skills and the security of our business. **Here's how to get started.**

**1)** Go to the internet and type in <http://bravolms.com/course/view.php?id=23> in the address bar and click enter. LMS will ask that you login.

**2)** Log in with your username/password, which are both your Bravo Health writing number. Then click the Login button.

**NOTE:**

If for any reason you are unable to log in, please contact the Distribution Services Unit (DSU) toll-free at 1-866-442-7516.

A screenshot of a web browser showing the login page for Bravo Health LMS. The address bar displays "http://bravolms.com/". The page header features the Bravo Health logo. Below the header is a green box titled "Login" containing two input fields: "Username:" and "Password:", both with the value "B010001". Below the input fields is a blue "Login" button. At the bottom of the login box are two links: "Create new account" and "Lost password?".

**3)** After logging in, you will be directed to the Course area. The Course area will contain several modules, or topics relating to Sales. These topics will have a learning object, which contains the material for the topic, and a quiz to test your understanding of that material. Be sure to review the training object first and then take the quiz.

Home > Sales Cert

Switch role to... Turn editing on

**Activities**

- Forums
- Quizzes
- Resources

**People**

- Participants

**Search Forums**

Go Advanced search

**Course categories**

- Bravo New Hire Orientation
- Call Tracker
- Claims
- Compliance Training
- Customer Service
- Health Services
- Human Resources
- Member Services
- Pharmacy
- Performance Support Leaders
- Sales
- System Application Training
- Search courses ...
- All courses ...

**Topic outline**

**Welcome to the Bravo Health**  
Sales Curriculum Area

Best In Class Sales Training  
Know More: Sell More

If it's your first time here, open the "READ ME FIRST" file below!

- Sales News Flash Forum
- Sales Agent and Broker's Network Forum

**1 First Timers Start Here**

- READ ME FIRST!!

**2 Medicare Fundamentals 101**

- Medicare Fundamentals 101 Quiz
- Medicare Fundamentals

**3 CMS, Regulatory Compliance and You 102**

- CMS, Regulatory Compliance and You
- CMS Regulatory Compliance and You Quiz

**4 HIPPA Requirements 103**

**Learning Objects**

**Quiz**

**Latest News**

Add a new topic...  
(No news has been posted yet)

**Upcoming Events**

There are no upcoming events

Go to calendar...  
New Event...

**Recent Activity**

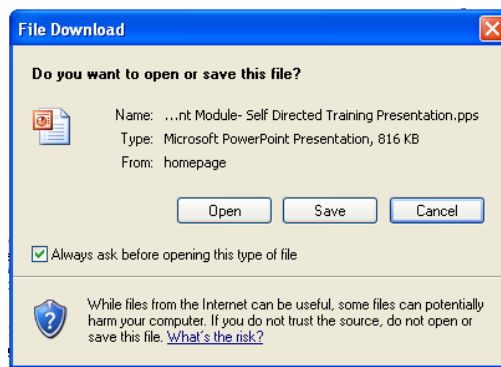
Activity since Saturday, 13 September 2008, 10:52 AM  
Full report of recent activity...

Nothing new since your last login

## What do I do next?

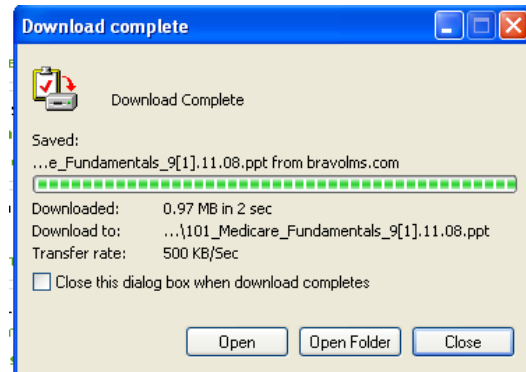
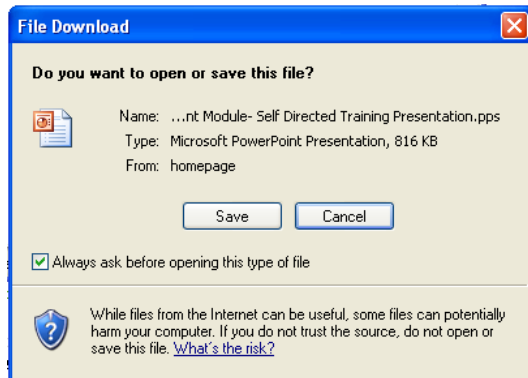
- Select a learning object by clicking on the link. This will bring up a second window with the actual content. Most learning objects use either the arrow keys on the keyboard or have controls on the window or in the program itself.

If while opening a learning object you receive this Microsoft security message, click the "Open" button to continue.



**NOTE:**

If you are working from your home computer, the Microsoft security message may limit you to either “Save” or “Cancel”. Click the “**Save**” button which will download the program to your hard drive and then click the “**Open**” button once it is downloaded. The file will run from its new location on your hard drive. Quizzes open without these steps.



**5)** When you have reviewed the learning content and are ready to take the quiz, click the link next to the quiz to begin.

**You must score an 85% or higher to successfully complete the test.**

**6)** IMPORTANT NOTE: You only get 2 attempts to pass the test, SO TAKE YOUR TIME AND READ EACH QUESTION CAREFULLY. Once you pass the test you will receive directions as to what to do next.

## **What if you have problems accessing the content or taking the test?**

Please contact us at (877) 437-5010 extension 2045